

F

E

D

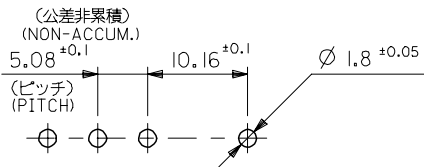
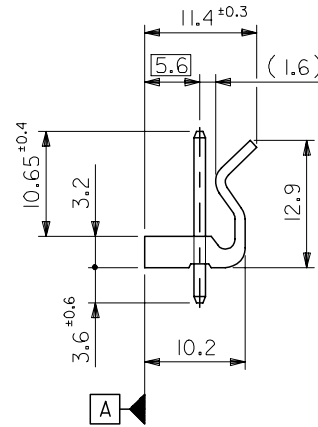
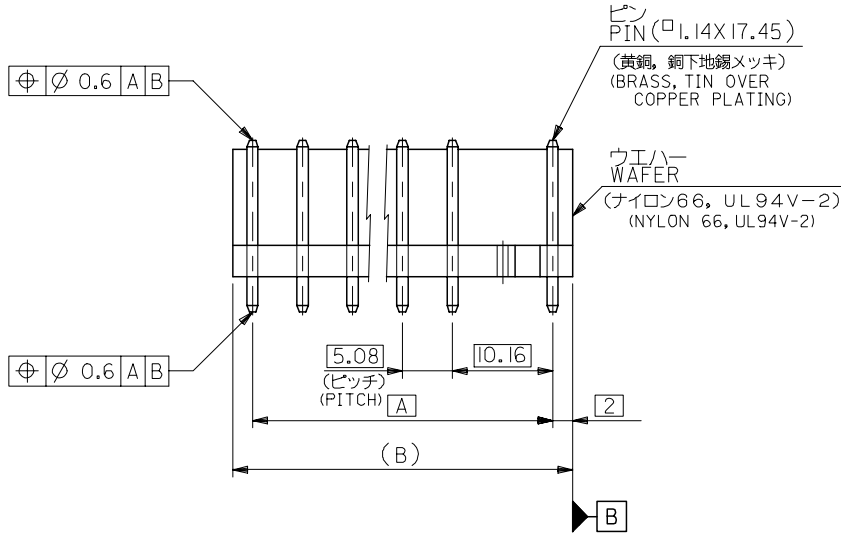
C

B

A

注記 NOTE

1. ウエハーのそりは、長さ25.4に対して0.24 MAX. CHAMBER MUST BE 0.24 MAX. PER 25.4
2. ELV 及び RoHS 適合品  
ELV AND RoHS COMPLIANT.



基板取付穴推奨寸法  
RECOMMENDED P.C.B. HOLE DIMENSION

49.72	45.72	10-63-1099	5285-09A	9
44.64	40.64	↑ -1089	↑ -08A	8
39.56	35.56	-1079	-07A	7
34.48	30.48	-1069	-06A	6
29.4	25.4	-1059	-05A	5
24.32	20.32	-1049	-04A	4
19.24	15.24	↓ -1039	↓ -03A	3
14.16	10.16	10-63-1029	5285-02A	2
B	A	EDP NO.	ENG. NO.	NO. OF CKT.

REVISED EC NO: J2007-2743 DRWN: YAMADA01 2007/04/10 CHKD: THARUYAMA 2007/04/10 APPR: NUKITA 2007/04/12	GENERAL TOLERANCES (UNLESS SPECIFIED)		DIMENSION STYLE MM ONLY		SCALE 2:1	DESIGN UNITS METRIC	THIRD ANGLE PROJECTION	
	10 UNDER	±0.2	DRAWN BY H. HIRAMOTO	DATE 1998/01/23	TITLE KK 5.08/10.16 WAFER ASSY WITH LOCK			
	10 OVER 30 UNDER	±0.25	CHECKED BY H. HIRAMOTO	DATE 1996/03/14	MOLEX INCORPORATED			
	30 OVER	±0.3	APPROVED BY M. FUKUSHIMA	DATE 1996/03/14	DOCUMENT NO. SD-5285-001	SHEET NO. 1 OF 1		
	ANGULAR	±3 °	MATERIAL NO.		SEE TABLE			
DRAFT WHERE APPLICABLE MUST REMAIN WITHIN DIMENSIONS		THIS DRAWING CONTAINS INFORMATION THAT IS PROPRIETARY TO MOLEX INCORPORATED AND SHOULD NOT BE USED WITHOUT WRITTEN PERMISSION						